



AMI Software Version 2.6 Feature list

On December 10th AMI Entertainment will begin deploying our newest software release to all AMI connected jukeboxes. We expect the full deployment to take up to 4 days and be fully complete by Thursday December 14th.

Following is a brief description of the most visible features included in this release. Once deployment is complete we will release our final 2006 catalog update on Tuesday December 19th. After that catalog, no further changes will occur until after January 1st.

Happy Holidays.

The most obvious change you will see in version 2.6 is the New AMI Music button as seen in figure 1 below. Pushing the New AMI Music button will take you to a list of all new music that has been added to our expansive library in the last 30 days. This button will only appear on broadband boxes that have an active connection to the internet.



Figure 1

New Music is also accessible by pushing the Search or MOD button, and then choosing "New Music added to the AMI network", as illustrated in figure 2.



AMI Software Version 2.6 Feature list

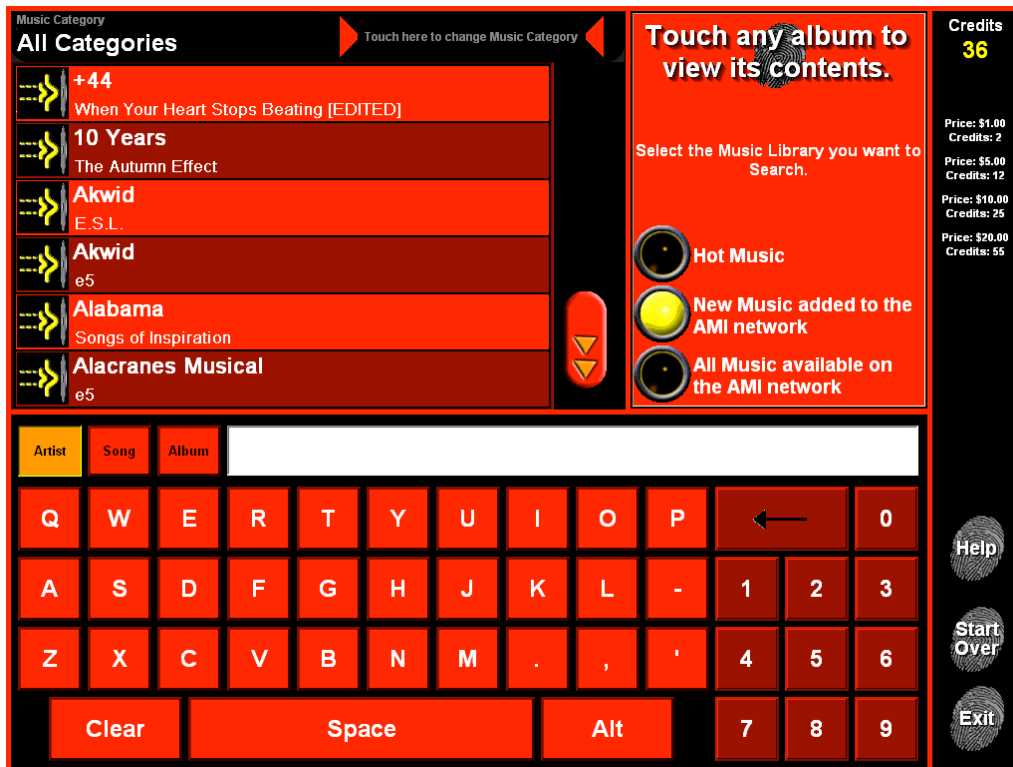


Figure 2

Figure 2 also shows a HOT MUSIC button, which will display all local albums (with pictures) plus all music that is stored on the hard drive in the cache (18,000+ songs), and a third button which will take you back to the full music list.

In the event that a jukebox temporarily loses its connection to the internet, on the main screen (Figure 1 above), the New AMI Music button will disappear, because the juke cannot access the new music in the library. The MOD button, however, will remain and when pressed will show the patron the Hot Music list, which again includes all local music (with pictures) plus the 18,000+ cached songs.

The significance of this is that when a connection temporarily drops for whatever reason, the patron still has access to all local music plus the 18,000 pre-loaded songs, plus every song that has ever been downloaded in that location. Patrons may not even realize the connection is down. Operators will appreciate that MOD's can still be played, which will further enhance the revenue stream even in the absence of an active internet connection.

The HOT MUSIC list will also assist patrons (like me) who can't remember song names, as this list will display only the popular songs on an album, which will improve our ability to make selections quickly without sorting through the songs that are not hit selections.



AMI Software Version 2.6 Feature list

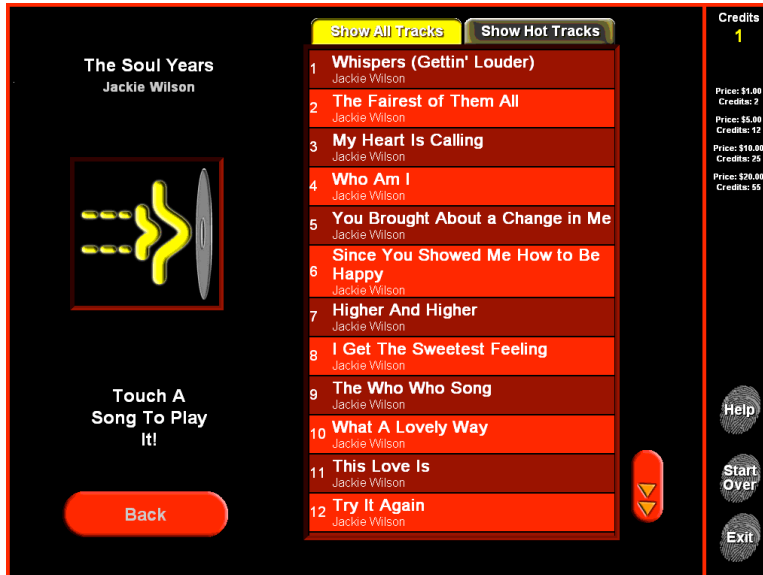


Figure 3

Figure 3 shows the song list for an MOD album when Show All Tracks is highlighted at the top. This is the default display when you choose an album from the search screen.

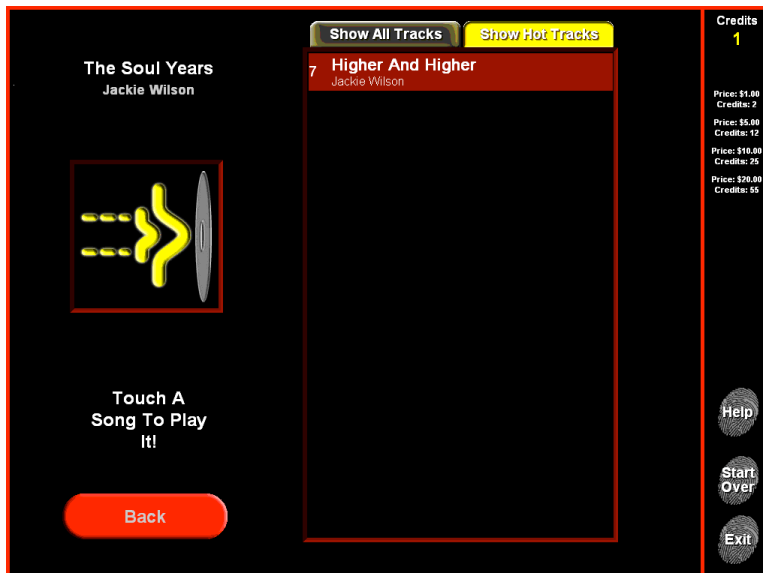


Figure 4

Figure 4 shows that same album, after I pushed the Show Hot Tracks at the top. Apparently, on that album of 17 songs, there is only one song that is played enough to make our top 18,000 list. This screen helps me select a song without having to analyze every song on the album, and try to remember which one was the hit song.



AMI Software Version 2.6 Feature list

The next section describes new service screens that were added, and descriptions of how they could be used to allow an operator to manage his locations better.

For those operators who have wisely connected their Merit countertop games to an AMI Powered Jukebox, you will now be able to see the countertop revenue that was used for music on the Jukebox. In doing so, the AMI sweep percentage will be automatically deducted, making location cash settlement easier for your collectors.

Basic Setup
1 Tech Serv Mod Box Help

Jukebox Name
1 Tech Serv Mod Box

Time Zone: 12:01:46 PM 12-1-2006
(GMT-09:00) Alaska

Daylight Savings Time

Operator Percent 50 % \$ **Music Fees** 5 %

Hide Cumulative Totals Column Hide Selector Values

Combine Off The Top with AMI Allowance

Undo Main Menu

Figure 5

On the Basic Setup screen there are 3 new features.

- 1) The ability to hide selector revenue on the jukebox collection screen.
- 2) The ability to combine the Off the Top fees with the AMI fees into 1 line on the collection screen.
- 3) The ability to rename Off the Top fees to some other phrase as shown in figure 5.

In figure 5 above I have renamed Off The Top to Music Fees, added \$5 per collection and hidden the cumulative totals column.



AMI Software Version 2.6 Feature list

Current Period		Last Period	
Period Begin	11/7/2006 9:48:17 AM	Period Begin	8/3/2006 10:15:11 AM
Period End	1/1/2000	Period End	11/7/2006 9:48:17 AM
Deposits		Deposits	
- Coins	\$4.50	- Coins	\$104.25
- Bills	\$65.00	- Bills	\$6.00
- Credit Card	\$0.00	- Credit Card	\$0.00
Total Deposits	\$69.50	Total Deposits	\$110.25
Music Fees	\$13.90	Music Fees	\$22.05
Net Collections	\$50.60	Net Collections	\$83.20
Credit Card Transactions	0	Credit Card Transactions	0
Operator Share	\$25.30	Operator Share	\$41.60
Location Share	\$25.30	Location Share	\$41.60

Buttons: Collect Money, Main Menu

Figure 6

Figure 6 shows the results of the changes made in the previous step. Notice that the fees are combined into one line called Music Fees, and the cumulative total is hidden from view.



AMI Software Version 2.6 Feature list



Figure 7

The Skin Configuration screen now allows you to change the Default Search Library. The factory default is to search the full music Library. You can change that to search the Hot Music (cache) library if you wish.



AMI Software Version 2.6 Feature list

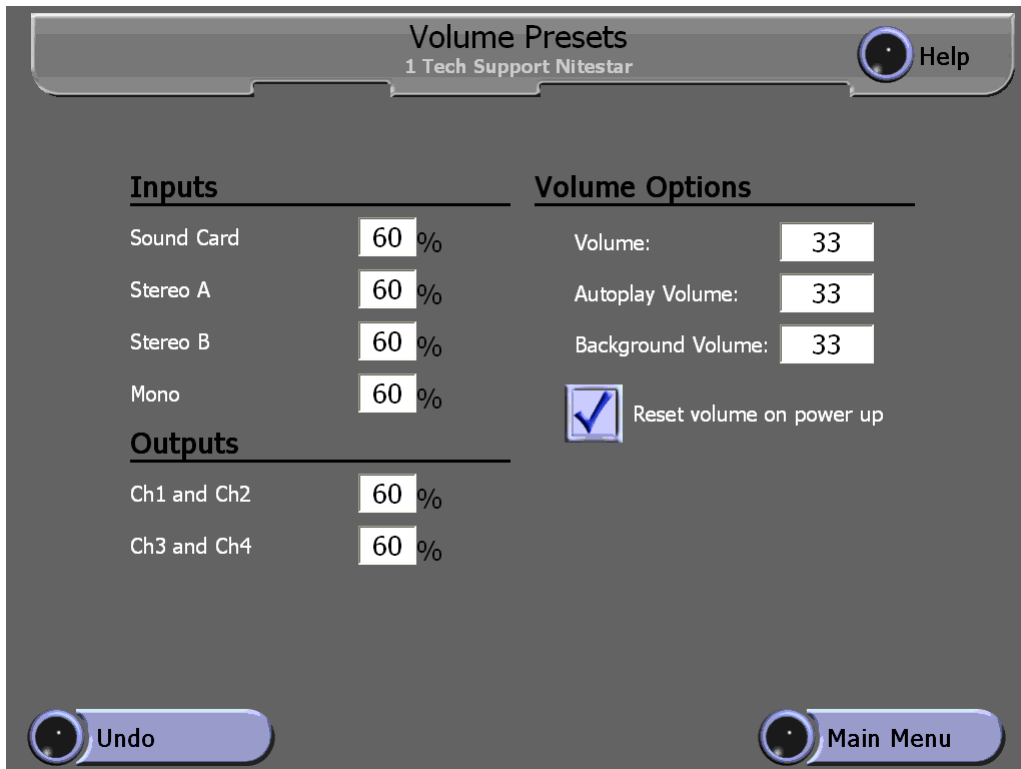


Figure 8

Volume Options – Leaving this box checked will cause the volume to go to these preset values when the jukebox is powered on with the Volume Control Unit or the I/R Remote, providing the jukebox has been turned off long enough to clear the play queue based upon the Clear Queue setting on the Queue Management page.

This option may be desired in locations where the volume is turned up in the late evening hours before closing time and the jukebox is turned off. In that case the volume in the morning would also be very loud, unless this option is used to automatically turn it down to a preset level.

The next set of screens is available by selecting the Diagnostics screen in service mode.



AMI Software Version 2.6 Feature list

Credit Device Tests
1 Tech Support Nitestar Help

Coins

Enabled Coin ID Coin Value Time

Bills

Enabled Bill ID Bill Value Time

Cards

Enabled Card ID Card Value Time

Clear Results

Undo Main Menu

Figure 9

Credit Devices Test is a new feature that operators have requested, which will allow you to test the credit devices without adding credits, and without adding money to the revenue screens. You can now go to this screen, put in any amount of money for testing, and no record is made of those monies, and no fee calculated for AMI. Figure 9 above shows a coin input signal was received from channel 2 with a value of 25 cents. On peripherals that are capable, clearing the enabled box will disable the device while you are in this screen. This feature will work on a Mars 2611 Bill Acceptor, but not on a coin acceptor as it does not have the capability to be disabled.



AMI Software Version 2.6 Feature list

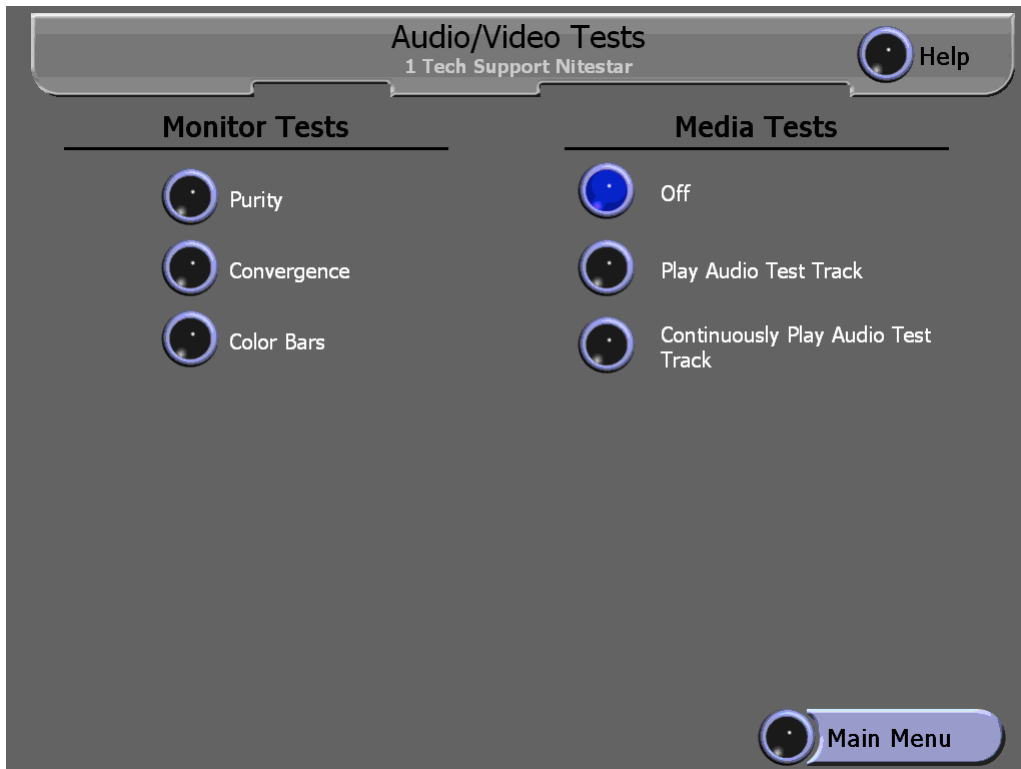


Figure 10

The Audio/Video Tests screen allows you to display test patterns on the display to aid in CRT adjustment, and also to play audio tones through the sound system to aid in speaker and sound system configuration.

Pressing Continuously Play Audio Test Track, Studio Sound equipped jukebox will take you to the screen shown in figure 11.



AMI Software Version 2.6 Feature list

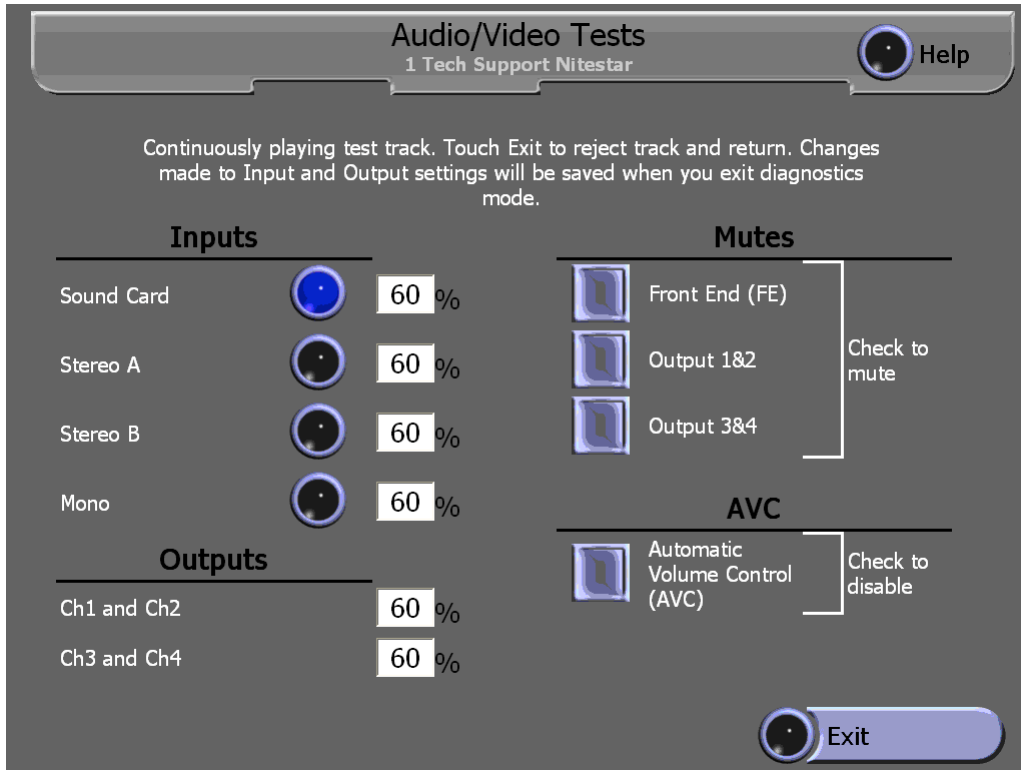


Figure 11 (Only Available on Studio Sound Equipped Jukeboxes)

...Where you can make changes to the sound system setup while various tones are playing.



AMI Software Version 2.6 Feature list

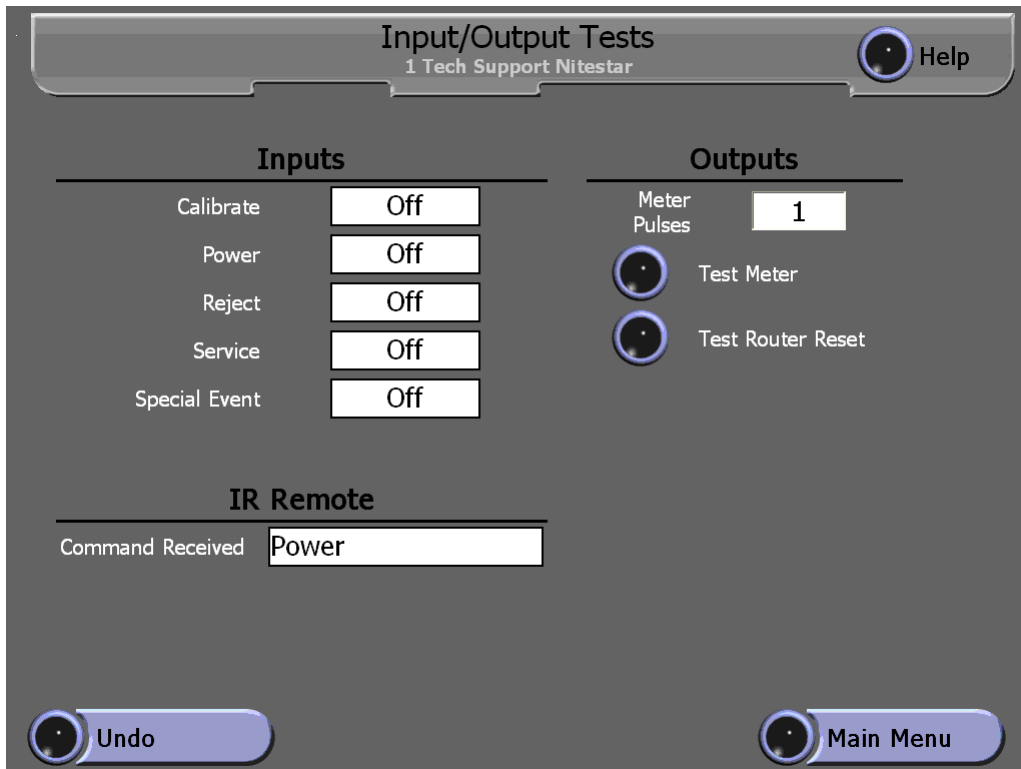


Figure 12

On the Input/Output Tests screen, you can test the pushbuttons on the Communications or Rowelink Control. When you push the Calibrate button the screen changes to "On". If you point the I/R Remote at the jukebox and press a button, the screen shows you what button on the I/R Remote was pushed. Test Meter causes an optional hard meter to pulse, and Test Router Reset causes the Router Power to be cycled off.



AMI Software Version 2.6 Feature list

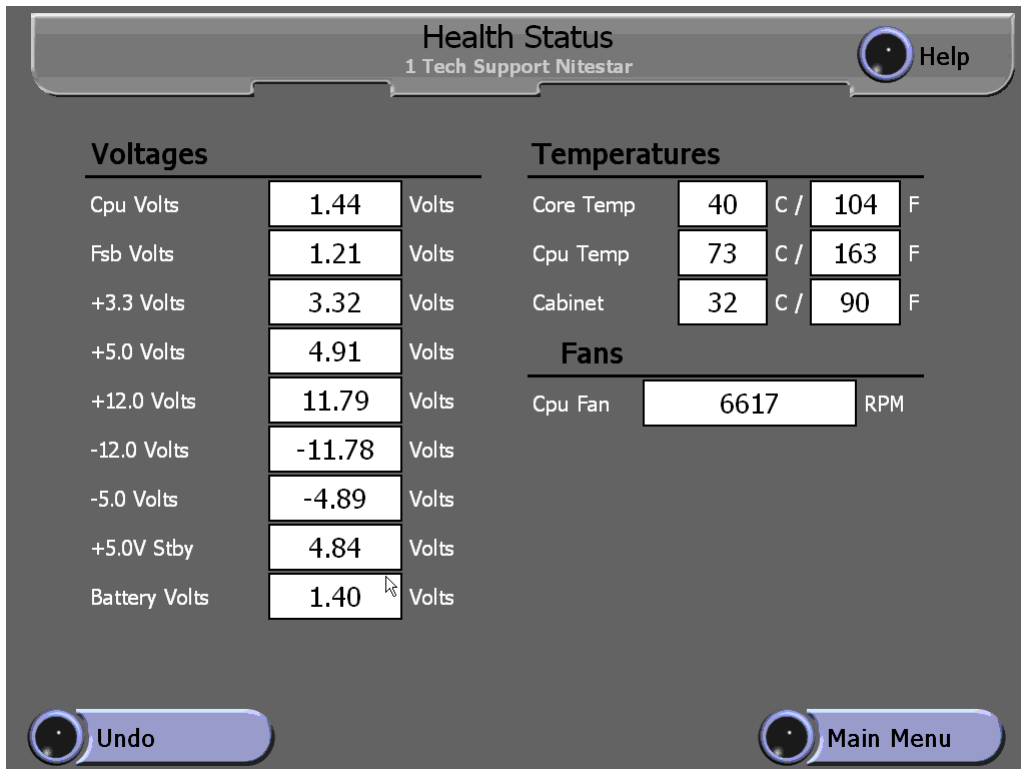


Figure 13

The last new Diagnostic screen is called Health Status. This screen will allow a technician to view the following.

- 1) Voltages present on the Computer Motherboard.
- 2) The temperatures being reported from the Motherboard.
- 3) The internal cabinet temperature reported on some models of AMI Powered Jukeboxes.
- 4) The speed of the CPU Fan on the motherboard.

Further enhancements are planned for this feature after statistics are gathered and "Normal" parameters are established.